

PEGAS SF & J

Motorized Swing Gate



The PEGAS-SF-S motorized swing gate is an ideal solution where aesthetic appeal as well as rugged durability are both considerations & where an unprotected a glass panel solution may likely be broken. With a protective stainless tubed frame that surrounds the perimeter and an internal tempered glass panel that can be etched with a logo or decorative pattern, the Pegas-SF gate provides just the right balance of durability & good looks that blend into any interior aesthetics requiring a wide clear opening or ADA access.

The gate can also perform well in exterior applications under cover from direct rain or uncovered with the optional weatherization kit provides an IP 65 rating. Additionally the gates frame can also be modified to an architectural specification and the internal panel material can be substituted to suit custom design requirements. The PEGAS-J gate offers dual horizontal tubed stainless steel loops attached to the vertical column and can be supplied with beveled corners or a round loop configuration. PEGAS-SF & J are supplied with our rugged motor drive unit that provides a silence and smooth movement and exceptional reliability to last for millions of problem free cycles.

MT Motor drive unit:

The Motorized work-horse of our PEGAS-SF & J gates designed to operate in a high volume rugged environment

- offers an effective blocking barrier system to prevent forced fraudulent entry attempts.
- designed with safety features that can detect obstructions while moving to prevent damage injury.
- silent and smooth movement without any distractive & unpleasant whiney gear box noise.
- additional operation mode: upon successful validation, nudge the barrier in open direction to engage motor to drive.
- easily set or modify panel open angle travel in entry & exit directions via our intuitive T-CONF SW.

Motor drive unit available in two configurations:

FAIL-LOCK: in a power failure, the gate remains in the hard-locked position - with optional battery back-up the gate can continue to operate for a period of 6 hours.

FAIL-SAFE: in a power failure (or emergency input) the gate is unlocked and the barrier can be freely opened in either direction.

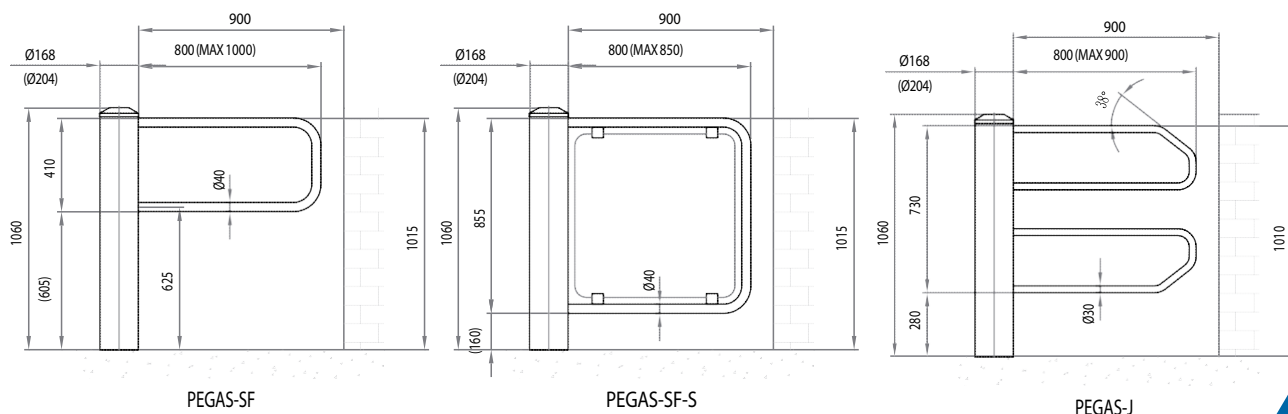
Materials and finishes:

Standard finish: brushed satin stainless steel / Central column: 168mm (6.6") dia. brushed stainless steel

Barrier: frame is 40mm (1.6") dia. stainless tube / standard barrier width: 850mm (33.5"), max width: 1,000mm (39.4")

Other mechanical turnstile parts: galvanic zinc or blackened finish.

The clear opening width is directly dependent on the barrier length, a max width of 1,000mm (39.4") can offer a 1,050mm (41.3") maximum clear opening. If a wider clear opening is required a pair of horizontally opposed synchronized Pegas gates can be used to control entry effectively. A synchronization option is available to provide precise synchronization of the pair.



PEGAS-SF

PEGAS-SF-S

PEGAS-J

Interface:

Gate operation is controlled by our ASIC microprocessor based electronics platform. Our advanced platform design facilitates numerous I/O interface options for connectivity options including traditional NO/NO selectable relays - including the following:

- Data/serial bus: RS485, USB or Ethernet (w/external converter)
- Configurable dry contact relays; NO/NC (inputs and outputs)
- Motor control via digital power bridges with overload protection and current measurement
- Continuous internal health status polling, logging & reporting - access errors/faults logs w/ time/date stamps for internal diagnostics
- Remote firmware upgrade through T-Server SW interface
- Direct & remote access to configuration parameter settings & passage & alarm events data through our T-CONF software
- Complete remote control capability & access to metrics including passage counters via a network connected PC & our T-MON SW
- Connectivity to various supplementary ultrasonic, laser or infra-red sensors to control the Pegas gate.
- Internal connection and intelligence within the gate that supports charging, measuring and auto-switching of power supply or battery back-up in case of a primary power failure.
- Easy connectors for fast and easy installation of all input/output signals, interfaces & serviceable components
- Our "Best of Breed" electronics enables highest operational reliability

With T-CONF configuration software running on your PC, select and set the following parameters on the Pegas gate with ease:

- automatic opening direction on control signal input command
- opening after pushing on gate's panel within the adjustable time allowed to complete passage
- automatic closing timeout per direction
- closing timeout when permanent signal for open disconnects
- closing the gate timeout upon receiving the close controller cmd

Control electronics ensures safe gate opening in both directions for an angle travel of 90° (total angle 180°). At customer's request it is possible to customize the travel angle per direction.

Control electronics are protected against short-circuits, overloading, brown-outs & polarity mismatch.

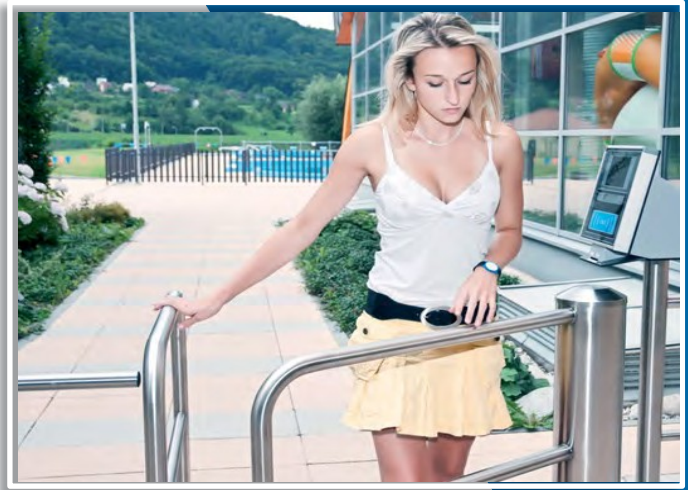
Technical Parameters:

Drive Unit electric parameters table:

| Type of drive unit | Rated supply voltage | Power consumption in basic operation modes | | |
|---------------------|----------------------|--|----------------|-----------------|
| | | Standby mode | | Opening/closing |
| | | Brake activated | Brake released | |
| Motorized FAIL-LOCK | 12 VDC | 3 W | 12.5 W | 35 W |
| Motorized FAIL-SAFE | 12 VDC | 12.5 W | 3 W | 24 W |

- Standard operating temperature: 10 to +50 °C (50 to 122°F)
- With heating module: -25 to +50 °C (-13 to 122°F)
- Relative humidity (max): 80%
- Mean Cycles Before Failure (MCBF): 3 Million Cycles

Note: Increase of power loading with optional "Heating Module" is approx.: 24W



ACCESSORIES

Optional: Column-Top Modules:

Top Module for integration of detection radar (automatic opening) or integration of proximity readers for PEGAS Gate with 204 mm (8") Dia column. With this module option: the gate opening angle travel is limited to 180° maximum.

External Reader Posts & Columns:

Mounting posts and columns ideal for mounting of Prox/Biometric Readers and/or other accessories (ex: LED traffic lights, displays, etc)

Remote Control Consoles & Touchscreens:

- manually control gate entry/exit or operational modes & settings
- LED's panels to remotely alert alarm events
- Control up to 4 turnstiles (or 3 turnstiles w/additional Emergency Button)

Batter Back-up:

PEGAS Gate can continue to operate for a period of 6 hours of continuous operation upon a primary power failure.

Push bar (Recommended if operating in "Push to Open" mode):

22mm (7/8") dia. Stainless tube push bar affixed to the top edge of the glass barrier panel (standard finish: brushed satin stainless steel).

Identification Systems

The Pegas Gate interface connects or interfaces with any type of Barcode reader, magnetic card, smart card, proximity card or biometric reader.

Software accessories:

T-SERVER - COMMUNICATION CLIENT software that enables the connection of the turnstiles & gates network with a PC or workstation. This program runs in the background (its activity is hidden) and enables to any PC with valid authority to make setting and control the turnstile network.

T-MON - SW program that enables direct control of the turnstile/gate system from any PC with valid authorization. Remote control of the same turnstile from different PC's is possible. The intuitive Graphical User Interface (GUI) is also ideal to use with a touchscreen monitor.

T-CONF - SW program that enables configuration and parameter value settings to be made and saved for backup. Access to error reports and internal logs are also easily accessed with this SW utility. Additional features include firmware updates and saving of accessible information in a familiar Windows environment. Network access available if system is configured for online access.

Custom features:

- choice of variable barrier widths (max: 1000mm / 39.4")
- choice of glass color tints and types (standard, green, blue, laminate)
- wider central column diameter: 204mm (8")
- custom glass designs/logos shapes per architect's request