



Our advanced technology multi-format terminal ideal for access control & ticketing applications.

ALL in ONE, Attractive, Intuitive & Reliable

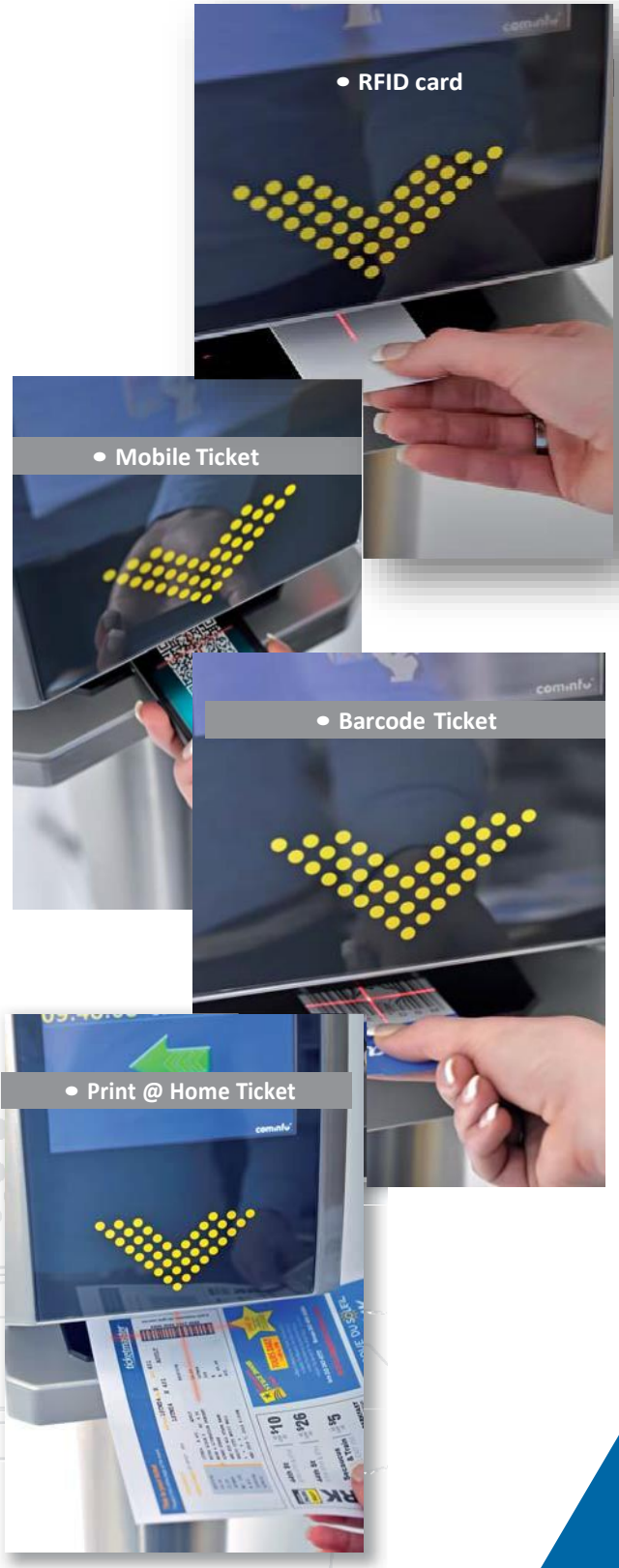
- One terminal for barcode tickets and RFID cards (Mifare, Prox, 2-D, QR, NFC ...)
- Attractive and vandal-proof aluminum housing
- Automatic multi-language messaging
- Sun-Readable 7" full-color industrialized LCD display
- Touchscreen option
- Large internal memory for off-line ticket validation including Anti-Passback feature if communication fails
- Wall-mounted, top-mounted or pole mounted with side-turn bracket
- A Single terminal accomodates bi-directional passage
- Several API protocols for easy integration with access control and ticketing systems

EASY-TO-USE

- One spot reads all barcode types and RFID cards
- Ticket size not limited & accommodates Print@Home tickets
- Support 1D/2D barcodes & QR codes from cell phone displays
- barcode reading from any direction for very fast ticket verification
- Available front-side RFID reader for easy reading of wristbands & prox cards

INTUITIVE USER NAVIGATION

- Instructional video animation showing how to place ticket
- Reading zone highlighted with backlighting
- Passage confirmation image / along with text message
- **GO-Cue** visual cue to proceed feature available on all COMINFO turnstiles & gates.



TECHNICAL SPECIFICATION REA::TICKET

Dimensions:	9.3" x 12.6" x 4.3" (W x H x D)
Weight:	Approx. 7 lbs. (without bracket)
Operation temp. range:	- 4°F to 122°F (-20°C to +50°C)
Power supply:	12V DC to 24V DC or PoE (PowerOverEthernet)
Power loading:	0.9A max (measured @ 12V DC)
Casework:	vandal-proof aluminum RAL powder coated housing
Ingress Protection rating:	IP 54

SUPPORTED IDENTIFICATION TECHNOLOGIES:**Proximity reader:**

13,56 MHz RFID technology - R/W (R/O)	ISO 14443A, ISO 14443B, ISO 15639 e.g. Mifare Classic, Mifare DESFire, Mifare Ultralight, TagIt HFI, EM 4035, EM 4135
125kHz RFID technology	e.g. HID, HITAG1, HITAG2, EM 4102, Cassi-Rusco

BarCode scanner:

BarCode tickets	Any size tickets with 1D and 2D BarCodes, QR code
Mobile tickets	1D and 2D BarCodes from mobile phone screens
Print @ Home tickets	Printed at home tickets on Letter or A4 size paper

Options

Front-side proximity reader for easy reading of RFID wristbands
NFC technology

DISPLAY SPECIFICATION:

LCD display:	Full-color graphic display Sun-Readable 7" LCD display, 800x480 resolution Optional touch screen technology
---------------------	--

Display features automatic multi-language messaging & instructive video animations with successful passage confirmation image cue.

INTERFACE SPECIFICATION:

Inputs/Outputs	4 inputs & 4 outputs (with option for: 8 & 8) (galvanically isolated input signals / potential free outputs)
Comm interface:	Ethernet (10/100Mbit) / RS485
Software interface:	API protocols for integration with access control or ticketing On-line as well as off-line (Access Control Server)

ADDITIONAL FEATURES:

Internal memory:	up to 60 000 tickets
Turnstile/Gate control:	- one-way mode - Bi-directional mode by a single REA Ticket terminal
Ticket verification time:	0.5 sec max. (by Access Control Server with Ethernet comm interface)
Installation:	Wall-mounted, Top-mounted or Pole-mounted (optional bracket for side turning of terminal)
Installation environment:	Indoor and Outdoor (covered or uncovered)



• Wristband

